

Simplified Chemical Feed

For municipal water treatment applications

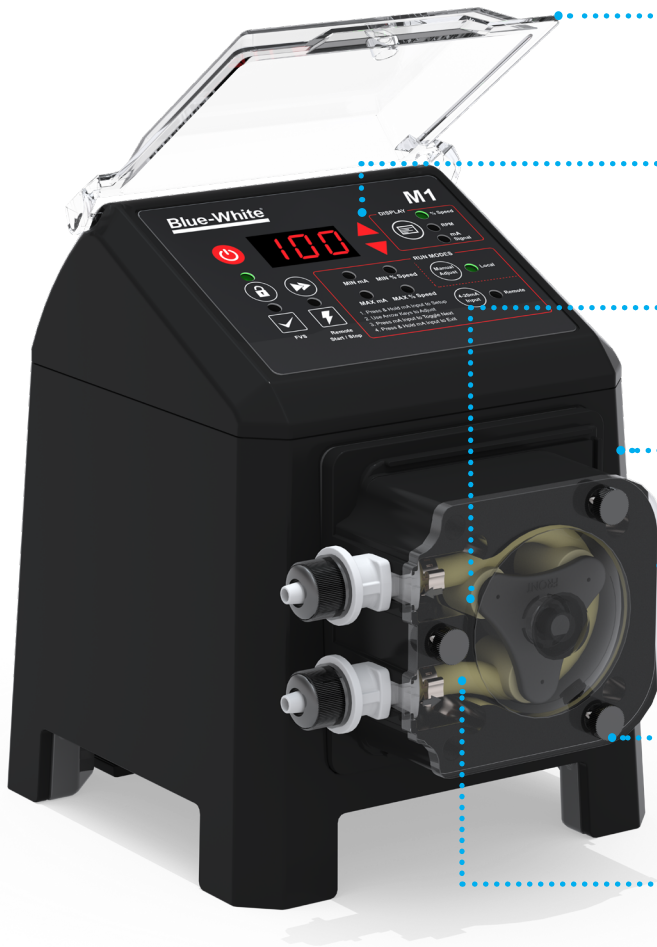


FLEXFLO®

Peristaltic Metering Pumps

M1

How does the FLEXFLO[®] M1 simplify chemical feed?



Heavy duty display shield

The UV and chemical resistant display shield protects controls from harsh environments.

Intuitive display

Simplified controls allows users to accurately adjust output, prime the pump, toggle control methods, and more.

Accurately engineered rollers

CNC precision machined squeeze rollers for optimum squeeze, unparalleled accuracy, and extended tube life.

Brushless DC motor

BLDC motor reduces energy costs and is more durable than AC motors.

Built-in leak detection

Patented Tube Failure Detection (TFD) senses tube rupture by detecting chemical in the pump head. There's no false triggering.

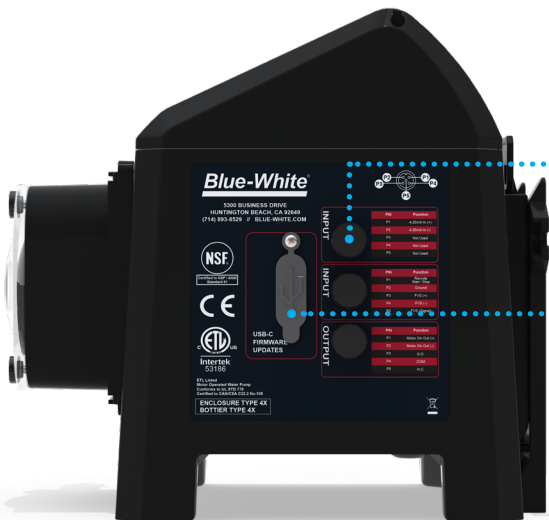
Minimal maintenance

No tools are required to open the pump head. The tube, the only part that shows wear, can easily be replaced.

Tubing options

Choose from three available tube materials for optimum chemical compatibility: Flex-A-Prene[®], Flex-A-Thane[®], and Flex-A-Chem[®].

Simplified I/O connections



IP67 rated M12 connection ports

Quick and reliable connection even in confined spaces. Protects against dust, moisture, and changes in temperature.

USB-C connection port

Download the latest firmware in the field, saving time while ensuring optimum performance.

The compact, rugged, and reliable chemical feed solution

FLEXFLO[®] M1

The M1 offers reliable chemical feed with simple-to-use controls and precise adjustability. Ideally suited for low-flow applications, this compact, rugged self-priming pump delivers smooth, consistent chemical feed across the pressures for which it is rated. Safety features include built-in leak detection and a lockout feature that prevents tampering - patent pending.



Technical Overview

GPH	.0001 - 5.6	Enclosure Rating	NEMA 4X (IP66)
LPH	.0004 - 21.2	Standards	cETLus, CE, NSF61
PSI	Up to 100	Power Supply	100 to 240VAC-50/60Hz
Bar	Up to 6.9	Warranty	5 years

Features

Benefits of a Peristaltic Pump:

- Peristaltic pump design does not have valves that can clog
- Self-priming – even against maximum system pressure
- Powerful suction capabilities - over 30 feet of suction lift
- Gentle pumping action, ideal for shear-sensitive chemicals
- Capable of pumping chemicals up to 10,000 centipoise
- Will not vapor lock or lose prime

Communication & Interface:

- Remote Start/Stop: Non-powered dry contact closure
- Relay outputs include single 250V/3A and single solid-state
- Compatible with Flow Verification Sensor (FVS) system
- Scalable 4-20mA SCADA input
- 4-20 mA output

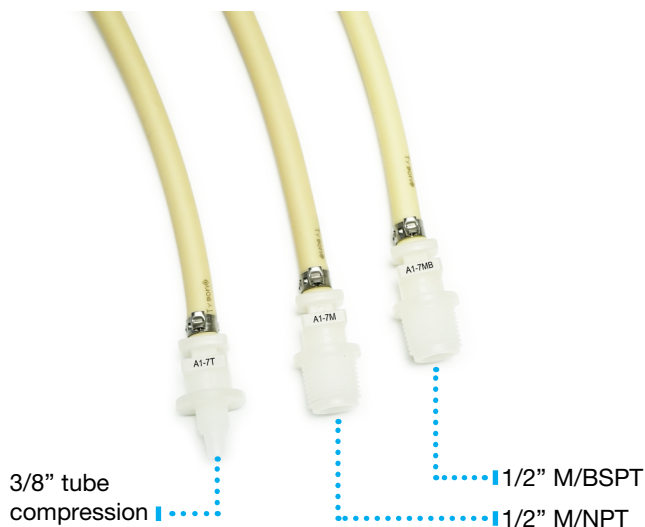


Tube materials and fittings

Flex-A-Prene[®] is an excellent material for most water treatment applications. Chemically resistant to 25% Sodium Hypochlorite, 50% Sulfuric Acid, 30% Fluosilicic Acid, Ferric Chloride, Alum, and many others.

Flex-A-Chem[®] tubes consist of an outer Norprene jacket with an inner liner virtually unaffected by acids, bases, salts, ketones and alcohol. Available in a medium stiffness for applications up to 50 PSI.

Flex-A-Thane[®] this polyurethane material can be used various chemicals including oil and water-based polymers: Sodium Hypochlorite, Alum, Ferric Chloride, fuels, lubricants, and many others. Available in medium stiffness up to 65 PSI.



Premium accessories to complete your system

STAR III® Chemical Tanks

STAR III® Chemical Tanks are made from natural polyethylene and UV inhibitors and will securely mount your chemical metering pump for easy access. All necessary accessories are included.

- KIT STAR-3 7 Gallon Tank
- KIT STAR-3 15 Gallon Tank
- KIT STAR-3 30 Gallon Tank



Floor Mount Brackets

Designed to hold your metering pump in place during operation. Secure your pump to the floor or shelf. Compatible with: M1 Peristaltic and MD1 Multi-Diaphragm metering pumps.

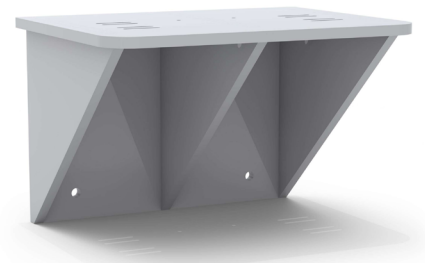
- KIT-MB



Wall Mount Kit

Mount your pump at a convenient height to improve ergonomics. The wall mount kit comes with a tough, chemical resistant high-density polyethylene bracket and four concrete wall anchors.

- KIT-PSM



M12 Connection Cables

Compatible with Blue-White's CHEM-FEED® M1, our M12 connection cables offer fast and easy connections even in challenging conditions. Their IP67 rating means they're protected against dust, moisture, and changes in temperature.

- KIT-M12 M12 Cable Assembly, 10 ft, Qty 2
- KIT-M12-2-15 M12 Cable Assembly, 15 ft, Qty 2
- KIT-M12-2-30 M12 Cable Assembly, 30 ft, Qty 2
- KIT-M12-3 M12 Cable Assembly, 10 ft, Qty 3
- KIT-M12-3-15 M12 Cable Assembly, 15 ft, Qty 3
- KIT-M12-3-30 M12 Cable Assembly, 30 ft, Qty 3

